



MAHENDRA RATNA MULTIPLE CAMPUS, ILAM

ESTD. -2016
B.S.(1968 A.D.)

PROSPECTUS(2022-23)



60 YEARS OF ACADEMIC SERVICE
Education for Knowledge, Skills and Wisdom"

ADDRESS:

Tribhuvan University
Mahendra Ratna Multiple Campus, Ilam
Ilam Municipality-7
Phone:027520020
E-mail: info@mrmc.tu.edu.np/chief@mrmc.tu.edu.np
URL:www.mrmcampusilam.edu.np
All rights reserved @ MRMC,Ilam

Affiliated to TU

60 Years of
Academic Service

ACCREDITED BY:

UNIVERSITY GRANTS COMMISSION
(UGC), NEPAL, (2072)

info@mrmc.tu.edu.np



027524653/027521761



www.mrmcampusilam.edu.np



MESSAGE FROM THE CHAIRMAN

I am very much delighted to know that the campus is going to publish the prospectus of Mahendra Ratna Multiple Campus, Ilam, a leading academic institution of eastern Nepal. Since its establishment this campus committed to impart quality education and bring changes in the society through research and publications. The campus is committed to make the best use of academic environment with the teachers' professional dedication, students creative involvement and planned execution of the management team.

The campus has four major streams viz. Education, Management, Humanities and Social Sciences and B.Sc. Horticulture. The campus focuses on interdisciplinary studies and planning to introduce some new and attractive programmes in the future. The campus is running master's programmes in five subjects of two streams, Education and Humanities and Social Sciences.

Mahendra Ratna Multiple Campus is the first QAA certified constituent campus in Nepal and recently it is in the process of re-accreditation. The campus holds sustainable position in its physical facilities, library, E-library and research works. The campus has emerged as a major institution in Nepal for innovative teaching learning and providing with diverse academic programmes.

I am confident that the campus will continue to advance and expand as an ideal educational institution and a hub for future leaders and innovators with the help and cooperation from and between the students, faculty members, staff, parents, stakeholders and the well wishers.

Thank You

MESSAGE FROM THE CAMPUS CHIEF

Personally, I am very much delighted to welcome you to Mahendra Ratna Multiple Campus, a leading academic institutions in the region for last 60 years. Since its establishment, this campus has been committed to bringing about changes in the society through teaching, learning and research. We make the best possible use of academic environment where the combination of teachers' professional dedication, students' creative involvement and management team's planned execution brings out the expected outcome.

Our focus is on interdisciplinary studies and career oriented learning in each of the faculties of Humanities and Social Sciences, Management, Law, Education and B.Sc. Horticulture.

In the last sixty years since Mahendra Ratna Multiple Campus was founded, the campus has emerged as a major force in higher education in Nepal and occupies a prime position in the eastern region of Nepal as a dynamic source for innovative teaching, learning and research. The campus has provided its students to study and choose from diverse academic programs in the areas of humanities, education, management and B.Sc. Horticulture.

We believe that education should help a person intellectually cultured, physically fit, emotionally stable, spiritually wakeful and socially responsible. For this, our academic programs aim to enable our students to think critically, to feel deeply and to analyze rigorously about the facts and phenomena they encounter in their process of learning and life in and beyond this campus. So, the campus is committed to providing the students with opportunities for excellence in their areas of studies and interest. Similarly, at a personal level our students' time here should be the most exciting of their life. For this we provide them with a range of transformative experiences, both inside and outside the classroom.

I hope that you who join this campus as students will have developed yourself in this direction by the time you graduate from here.

Best Wishes,

Accreditation letter of UGC

Vision, Mission, Goals and Objectives (VMGOs) of the Campus

2) Vision, Mission, Goal and Objectives (VMGO)

A) Vision

Leading higher educational center of academic excellence in teaching, learning and research.

B) Mission

Develop competent human resources through scientific and applied education.

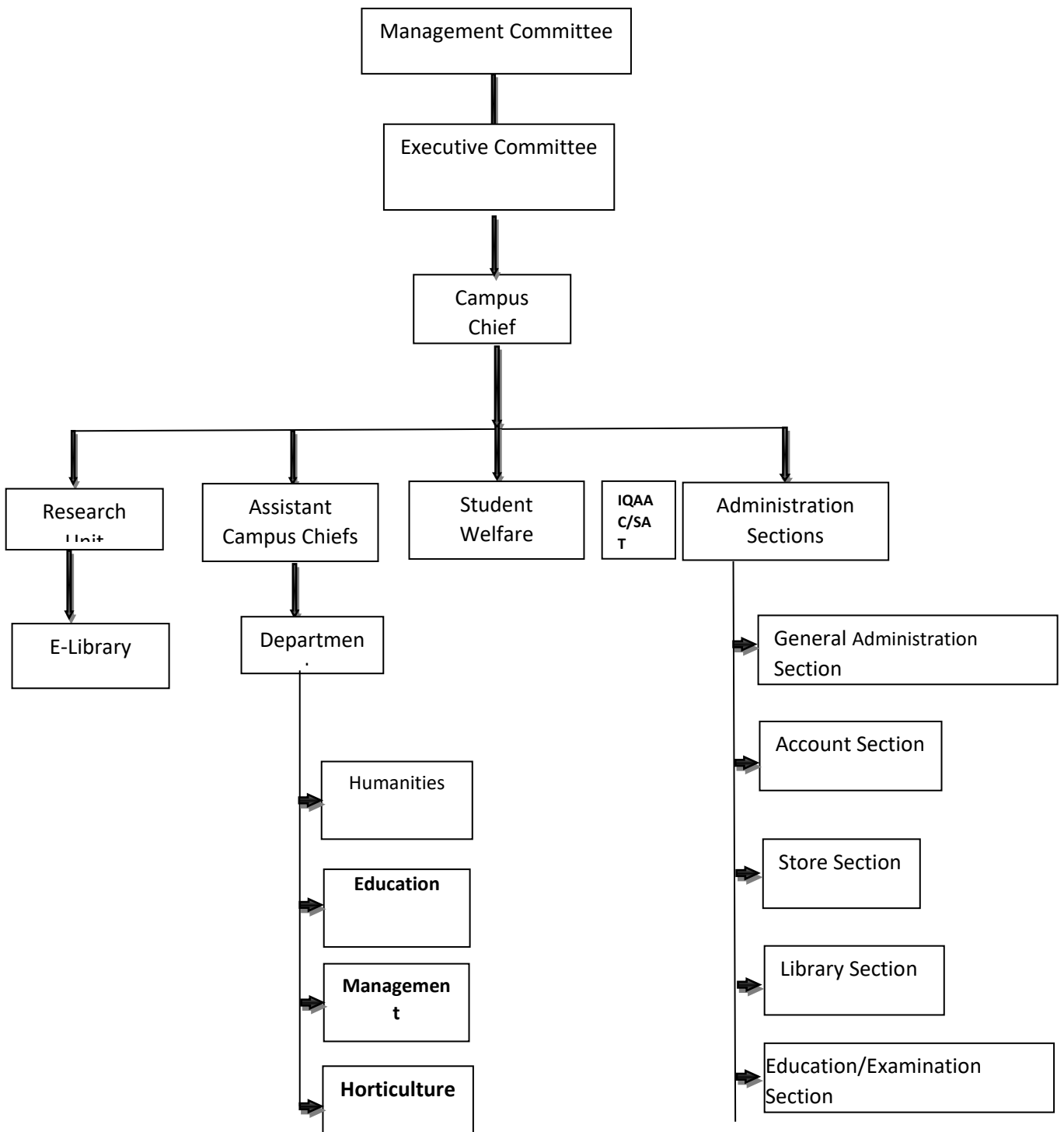
C) Goal

To improve the quality of existing academic programs and inspire the society for the establishment of deemed university.

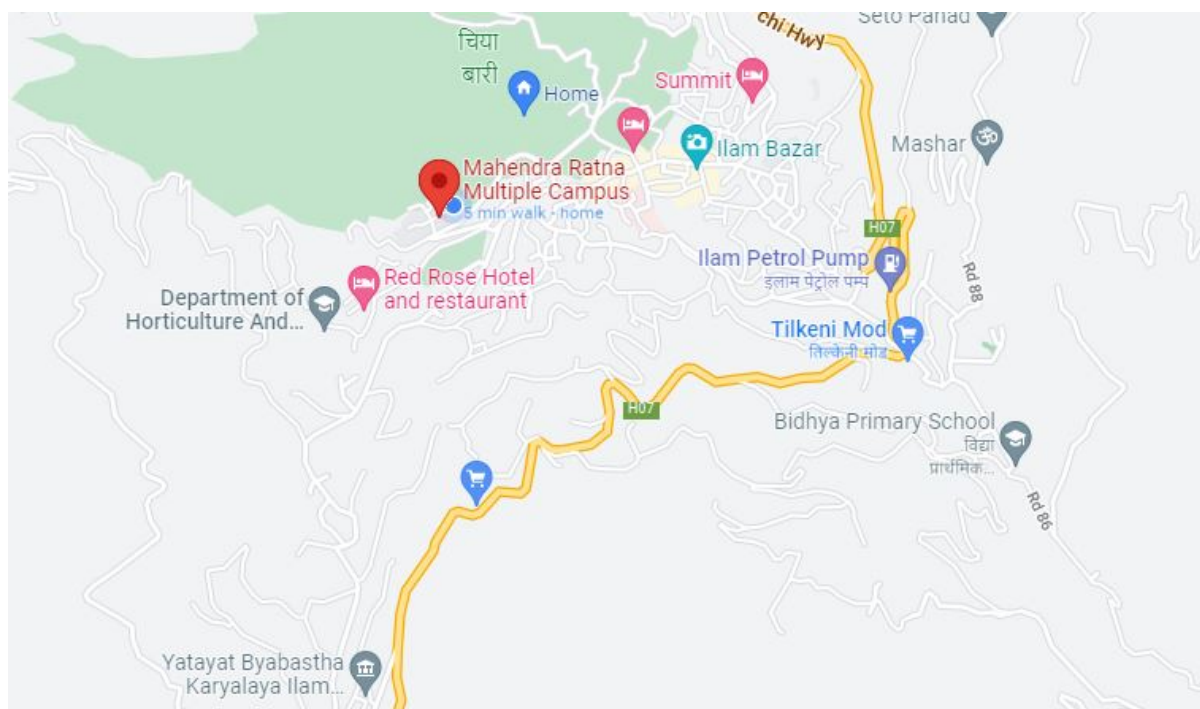
3) Objectives

- To improve the educational status by systematically managing its physical infrastructure such as faculty wise class rooms, library, labs and equipments.
- To improve the examination results of the students by reforming, extending and better managing the existing academic programs, and to promote the Campus as the centre of academic excellence through competition and timely reformation of the curricula.
- To establish the Campus as an institution having subject wise professionally proficient and skilled human resources.
- To establish the Campus as a well managed academic centre for research.
- To establish the Campus economically and financially with a due mobilization of internal and external resources.
- To develop, extend and upgrade the internal activities and student welfare programs.

Organizational Structure/Organogram



CAMPUS LOCATION MAP



INSTITUTIONAL PROFILE

Introduction

The word, 'university' is derived from the latin word 'universitas' which means "community of teachers and scholars" (<http://en.wikipedia.org>). In modern usage, the word has come to mean an institution of higher education offering tuition in mainly non-vocational subjects and typically having the power to confer degrees. It suggests that a university is an institution of higher education and research which grants academic degrees in a varities of subjects. Tribhuvan University (herein after TU) has been playing a pivotal role in imparting higher education to youths in Nepal since its establishment in 2016 B.S. TU has extended its areas of teaching/ learning activities by establishing more than 60 constituent campuses across the country.

Mahendra Ratna Multiple Campus (herein after MRMC), Ilam which was also established in the same year (2016) as of TU, is the first autonomous campus under TU constituent campuses to enter into the process of obtained Quality Assurance and Accreditation(herein after QAA) with its own academic strength and status. The campus was approved to run autonomously by Tribhuvan University in 2066 BS (1st February 2010). This allowed the campus to take academic, financial, infrastructural and administrative decisions by itself. Inagurated on 21st Ashad 2017 B.S. (1960 A.D.) as Mahendra Ratna Mahavidyalaya with the enrollment of only 26 students, this campus started offering classes under the Founder Principal Mr. Khagendra Nath Sharma. At that time, it only offered the course in Intermediate of Arts(I.A.) and since 2041 it started offering courses at both certificate level and Bachelor level with the approval from TU. Now, it has expanded its academic programs in different disciplines and levels. This campus has been playing a leading academic role in Ilam district and other neighbouring districts- Jhapa, Panchthar and Taplejung. MRMC, Ilam believes to translate dream into reality by producing efficient and employable youths in the job market in this modern competitive age to serve the community. Having its own cherished past of academic excellence initiated by energetic professionals

dedicated to quality education, MRMC, Ilam deems that education is the only thing that is worthy of investment for the improvement of the quality of life of people pushing the frontiers of excellence. It believes that education is not the name of any degree or certificate that can be shown to others as a proof but education is the name of our attitude, actions, language, behaviour and personality with others in real life. This campus has been running multiple programs offering wide range of subjects to its students. It provides programs of the Faculty of Humanities and Social Sciences and Faculty of Education at Bachelor and Masters levels, Faculty of Management and Horticulture Management at the Bachelor level. Since 2069, this campus has conducted this B.Sc. program in Horti-Flori Management (18 semesters) approved by TU with the intake of 30 students on its first academic year. Recently the campus has introduced four years (eight semesters) BBA program.

Overview of the Catchment Areas

Named after Late King Mahendra, MRMC is located in Ward No. 7 of Ilam Municipality in a peaceful and serene landscape against historical tea garden of Nepal established in 1920s. Students from all parts of Ilam district and from other districts of Mechi zone and also from other regions of Nepal join to pursue their studies in this campus. MRMC, Ilam bears a glorious history of producing graduates in political, economic, social, academic and civil services. Majority of the students enrolled in the campus are from lower middle class and middle class population from different parts of the Eastern region. Students are attracted to join the campus because of the low and affordable tuition fee and easy access. It has now 80 teaching faculty members and 32 non-teaching staff including support staff providing higher education opportunity to more than 2400 students in various academic programs. The campus places a high priority on creating an environment that enables teaching and non-teaching staff to perform their best job. The faculty members are driven by cross disciplinary collaboration and community sense for quality education and quality manpower. The campus has 4 faculties with M.Phil, and 70 Faculties with Master's Degree. It has a moderate climatic condition neither so cool nor too hot with a panoramic beauty of nature, greenary and tea gardens around. Thus, Ilam can be a good destination for students willing to undergo higher education. MRMC Bachelor and Degree holders have been working as key figures in government offices, various financial institutions, NGOs, INGOs and corporations as well as in private sectors.

ACADEMIC PROGRAM ACTIVITIES (FACULTIES)

The Faculty of Humanities and Social Sciences (FoHSS)

TU's main objective of setting up FoHSS is to produce trained and specialized human resources in both basic and applied areas of humanities and social sciences. In Ilam, there are 4 Departments with specialized study areas. These include inter-disciplinary subjects like English, Nepali, Rural Development, Sociology and Anthropology, Geography, Economics, Political Sciences, Culture (NeCHA), Mathematics, History and so on. They also offer research methodology courses. There are altogether 32 teaching staff in FoHSS. Terms of References (ToRs) are distributed to all departments and sections of the campus to carry out the respective roles and responsibilities. Some departments publish journals and also have set up a small library corner. The campus has adopted both annual and semester system for academic programs.

The Faculty of Management (FoM)

FoM aims to educate students for professional pursuits in business, industry and government. It further caters for enhancing the knowledge and understanding of business and administration and creating more and more employment opportunities in the job market.

Besides Bachelor of Business Studies(BBS), the campus has introduced Bachelor of Business Administration (BBA) in semester system of TU in 2079 to cater to the needs and demands of the students, stakeholders and civil society of the district for middle level managerial positions in business sector in the home and abroad.

Similarly, Bachelor in Social Work (BSW) under FoHSS is also in pipeline of introducing to produce generalist social workers in human relations and social problems like domestic violence, conflict, child rights abuse etc.

The Faculty of Education (FoE)

The campus offers one year B.Ed and four year B.Ed in Economics, English, Political Science, Mathematics, EPM, Geography and Education in order to meet the aim of offering general education and vocational education.

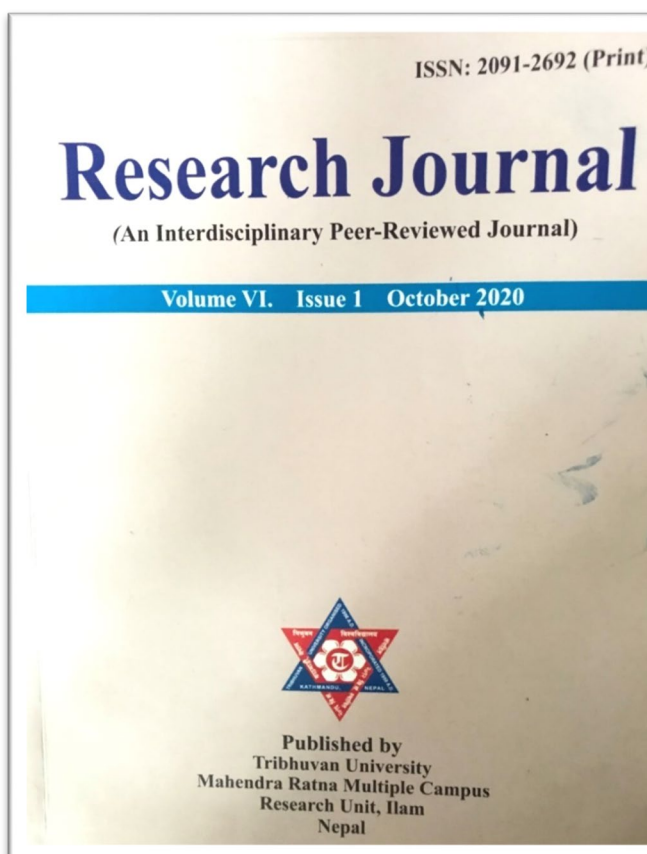
Department of Horticulture Management(DoHM)

TU launched a four year Bachelor's Horticulture and Floriculture program for the first time in Nepal in MRMC, Ilam in 2012 A.D. (2069 B.S.) The main objectives of this program are to create efficient and job oriented human resources in the areas of Horticulture, Agriculture and Floriculture and promote, co-ordinate and disseminate the academic research on the same subject discipline. The campus has constructed labs for Biology, Chemistry and Horticulture for the students. It has also constructed shed house, rain water harvesting tank etc.

RESEARCH & PUBLICATIONS

The Research Unit

The campus has a provision of providing Mini-research grants to the teaching faculties through Research Unit of MRMC. Likewise, the campus



also encourages and promotes teachers for the publication of their research articles through annual journal publication of Research Unit called 'Research Journal'.

THE LIBRARY

The campus has automated library within its premises against tea garden offering services for the students studying at both morning and day shifts. The campus also offers e-library services and e-resource sites to the students and teaching faculties. The two storey building has cozy and spacious rooms to engage in studies sitting in the library itself.



CANTEEN

The campus has a newly set up canteen in the campus premises freely accessible to students, both teaching and non-teaching staff at their break time on all weekdays. With its friendly atmosphere, it offers varieties of hygienic dishes, freshly prepared and in subsidized rates.



TU provided academic autonomous status to MRMC in 2066 B.S.(18th Magh) and accordingly MoU(Memorandum of Understanding) took place between the campus and UGC, Nepal on 24th Magh, 2066. The campus obtained QAA on 24, Bhadra,2072. One of the indicators of MoU was QAA which had two components- QAA cycle completion and acquiring QAA certification. For the second achievement, MRMC formed twenty six cells to collect data and inputs as per the nature and ToR provided to the respective cells and submit reports to IQAC.

Various initiatives have been undertaken by the campus in response to the priority and general recommendations made by the PRT(Pre-Review Team) so as to pave the path of academic excellence and sustainability of the activities in the campus. Providing autonomy was a means while the end was the quality itself in education and human resources. The campus, in its move to participate in the QAA process, has formed a 3-member team called SSR preparation under the chairmanship of Mr. Deependra Dulal including 2 other members - Mr. Rajendra Baral and Mr. Sitaram Ghimire. The campus has also formed a 5 member team called SAT to work on the preparation of SSR (Self-Study Report). It includes Mr. Rajendra Baral as Co-ordinator and Mr. Mukunda Guragain, Mrs. Bimala Pokhrel, Mr. Punya Bhattarai and Mr. Kendra Khatri as members. Both committees are supposed to prepare a SSR and to submit to the QAA Division of UGC for the certificate of accreditation from within 4 months starting from the formation of the team.



Both committees are supposed to prepare a SSR and to submit to the QAA Division of UGC for the certificate of accreditation from within 4 months starting from the formation of the team.

IQAAC and SAT hold meetings with different stakeholders of inside and outside the campus. Both collected inputs, feedbacks, problems and possible remedies from them. The committees have completed their assigned tasks of preparing the SSR by incorporating the issues and concerns prior to the peer review. The campus has submitted the Letter of Intent(LoI) to UGC for the final peer review visit from UGC for the accreditation/ renewal process. The campus has also submitted the SSR to the UGC prepared by the SSR preparation committee. The total QAA certification process is carried out by a IQAAC committee with seven members.

ECA & COUNSELING

We believe that sports and physical activity enhances every aspect of a student's development and learning. It is the students' window to the external world and forms the foundation of social, intellectual, physical, and emotional skills that are requisite for success, as well as, in life. To encourage such activities, MRMC, Students' Welfare Section has managed a basketball court, volleyball etc. to keep them occupied and involved. We believe the participation of students in different extracurricular activities bolster the capacity of creative learning and recognize their potentials allowing them to explore the values of leadership and team spirit. Different activities such as welcome & farewell

programs creative writing, quiz contests, debate, spelling bee, cultural programs are conducted at the academic routine. We provide mentoring and counselling for all our students as an integral phase that bridges a student's prospective and career. We offer individual assistance on all aspects of career planning and decision-making, including self-assessment; choice of major and career field; exploration of career-related interests; pursuit of internships and employment; and application to professional and graduate school. Throughout their time at Ilam campus, students will have access to numerous resources to help them design their vision for meaningful career paths and prepare for the future. They are encouraged to develop their thoughts intracting with counsellors who are here to help them. In each of their intellectual endeavours, our students are driven by the belief that their work must — and will — have an impact in their communities, in society and the world. Students leave Ilam campus prepared to thrive as independent, innovative leaders, no matter what path they choose in future.



EXCURSIONS

Our institute organizes long and short excursions annually as part of the academic program which provides first hand experience of our country, its landscape, living conditions of people, and various cultures and traditions. The students are provided with an opportunity to not just explore and enjoy nature but also understand and see the effects of changing global weather conditions and its direct and indirect impacts on all. Such excursions help them learn various aspects of commercial culture, traditional and cultural values, and beauty of the landscapes of this country.



Salient Features of MRMC

- **Facilities and Attractions:**
- Hostels(Boys' and Girls'),
- Automated library,
- Communication infrastructure like internet, CC Cameras,
- Subject wise Departments with computer and internet access
- Extracurricular activities,
- Health care centres,
- Boundary wall
- Staff residence,
- Scholarship scheme(full/50%),
- Public support services,
- Peaceful and natural landscape of historical tea garden nearby,

- Extension of classroom buildings and spacious classrooms,
- Transportation service,
- Wider catchment areas,
- Strategic planning
- Academic calander and prospectus
- Encouraging faculties for further studies (M.Phil. & Ph.D.)
- QAA certification,
- Quality teaching and learning,
- Research training/workshops and publication,
- Mini-research projects

MRMC and Way Forward

MRMC, Ilam has established and sustained its own historical academic status and potential at the provincial and national level. It aims at preparing disciplined, self-reliant and responsible citizens. It has its own land (about 200 ropanis) buildings/blocks and human resources, automated library and academic status and recognition. The campus has promulgated its own policies and procedures for implementing academic, administrative, financial and infrastructural activities. In this regard, the campus has been strongly supported by all stakeholders from inside the campus and by the community. The sustainability of the development and the academic improvement of the campus are trusted by the participation of the stakeholders regularly from the past decades to the present time of campus that can be seen in the prospectus and bulletin. The campus has intensely worked for the infrastructural development. However, a number of activities have to be completed with more active role and participation of all concerned. There is a high expectation that the campus introduce technical studies, science studies, CTEVT based subjects, so that the quality students produced by both community and private schools and colleges should not go out to pursue further studies at the Bachelor's levels.

Conclusion

MRMC, Ilam is an academic asset of Ilam district. It has been carrying on a 6-decade long glorious and leading academic history in the eastern part of Nepal. It carries a great responsibility and expectation of the stakeholders and community. Now, MRMC has sufficient infrastructure such as buildings, classrooms, stage, library, communication infrastructure. However, the expectations are still more concerned with the quality of teaching and learning, research works and refresher trainings, transparency in actions and activities, right to information, result analysis admission ratio of the students, introduction of new subjects and their market research as per the local need and context.

MRMC, Ilam has come a long way through ebbs and flows at different times. There is a high expectation that MRMC will contribute a lot to the community and stakeholders through high service delivery of quality education and performance. We, as educators, believe in broadening the scope of learning, wisdom, and skills and positive attitude required for overall development as a human through quality educational services. We consider our seniors and guardians as our torchbearers and would like to assimilate their practical suggestions to ascend further.

Finally, we are committed to work hand in hand for the betterment of the campus and benefit of all the concerned.

FACULTY & STAFF

There are 79 teaching faculties while the number of staff is 32.

MRMC ALUMNI

On 21st Sawan 2068, a meeting of ex students of MRM campus formed an Alumni Association with the membership of the following people.

1. Mr. Narendra Gurung - Chairperson
2. Prof.Dr. Bhim Prasad Subedi - Vice Chair
3. Mr. Naranaryan Bats - General Secretary
4. Mr. Chirinjibi Karmacharya - Treasurer
5. Mr. Ganesh Bhattarai - Secretary
6. Prof. Dr. Nobel Kishor Rai - Member
7. Mr. Madhav Prasad Chamlagain - Member
8. Mr. Gopal Acharya - Member
9. Mr. Mausam Khanal - Member
10. Mrs. Gita Bhattarai - Member
11. Mr. Dambar Pahadi - Member

The Alumni Association MRM Campus Ilam Unit has been also been formed with the membership of the following people.

1. Mr. Rajendra Baral - Member
2. Mr. Bhim Prasad Rijal - Member
3. Mr. Dipak Lungeli - Member
4. Mr. Santosh Parajuli - Member
5. Mrs. Bimala Pokhrel - Member
6. Mr. Punya Prasad Bhattarai - Member

EXECUTIVE COMMITTEE

A campus Executive Committee has been formed to reach to the major decisions. The following are the members of the Executive Committee.

1. Chairperson - Mr. Khagendra Pd. Chapagain
2. Member - Mr. Deependra Pd. Dulal
3. Member - Mr. Badri Pd. Phuyal
4. Member - Mr. Posta raj lamichhane
5. Member - Mr. Chandra Kanta Subedi

6. Member - Mrs. Sarita Niraula- Member Secretary

STUDENTS' CODE OF CONDUCT

- MRMC, Ilam gives primary importance on positive attitude and discipline within and outside the campus premises. Valuing the self-disciplinary principles, we orient students, faculty and staff members with a code of conduct at the beginning of the session and expect all to adhere to it with respect to the college norms and values.
- Students are expected to conduct themselves consistently with respect to code guidelines on and off campus, particularly at college-sponsored events or programs, educational training, field trips, seminars and other campus activities regardless of location.
- Students are required to carry their Identity Card issued by the institute at all time.
- Students are expected to be punctual and required to be within the campus before the start time.
- No student will be allowed to leave their classes in between and are required to be present until the classes end for the day. Exceptional cases may be entertained only after respective approvals.
- The campus will not tolerate any misbehavior, the influence of stimulating substances like narcotics, alcohol, cigarette and lethal drugs, weapons, violence etc. If any student is found guilty she/he will be immediately expelled from the campus.
- Strict action, suspension, and fines will be imposed who indulge in unauthorized leave, bunk classes, damage campus property.
- Students are required to attend campus in a prescribed uniform and maintain hygiene and should be well-groomed at all times. The security deposit will only be refunded after the successful completion of course.
- Admit card, exam forms, mark sheet, character certificate, and documents will not be issued without clearance of dues if any from the Accounts Department and campus library.
- In case of dispute, the decision of the managing committee will be final. MRMC reserves the right to modify or eliminate existing norms and formulate new ones without any prior notice if deemed necessary .

Photos of Building/tea garden/Ilam Bazar and Campus Surroundings

