

---

# AI AND THE FUTURE OF HUMANS: IMPACT, ETHICS, AND COLLABORATION

---



## Introduction

Artificial intelligence (AI) is no longer a futuristic concept but an integral part of human life, transforming industries and reshaping how we work, learn, and interact with the world. The impact of AI on society is profound, affecting everything from job markets to ethical dilemmas. As AI continues to evolve, its relationship with humanity becomes a central topic of discussion. This article will explore how AI is changing the human future, with a focus on the job market, healthcare, education, ethical concerns, and the collaborative potential between humans and AI.

## The Impact of AI on Jobs

One of the most significant areas where AI has made an impact is the workforce. **AI-driven automation** is transforming industries at a rapid pace. Machines now perform tasks that were once the sole domain of humans, particularly in

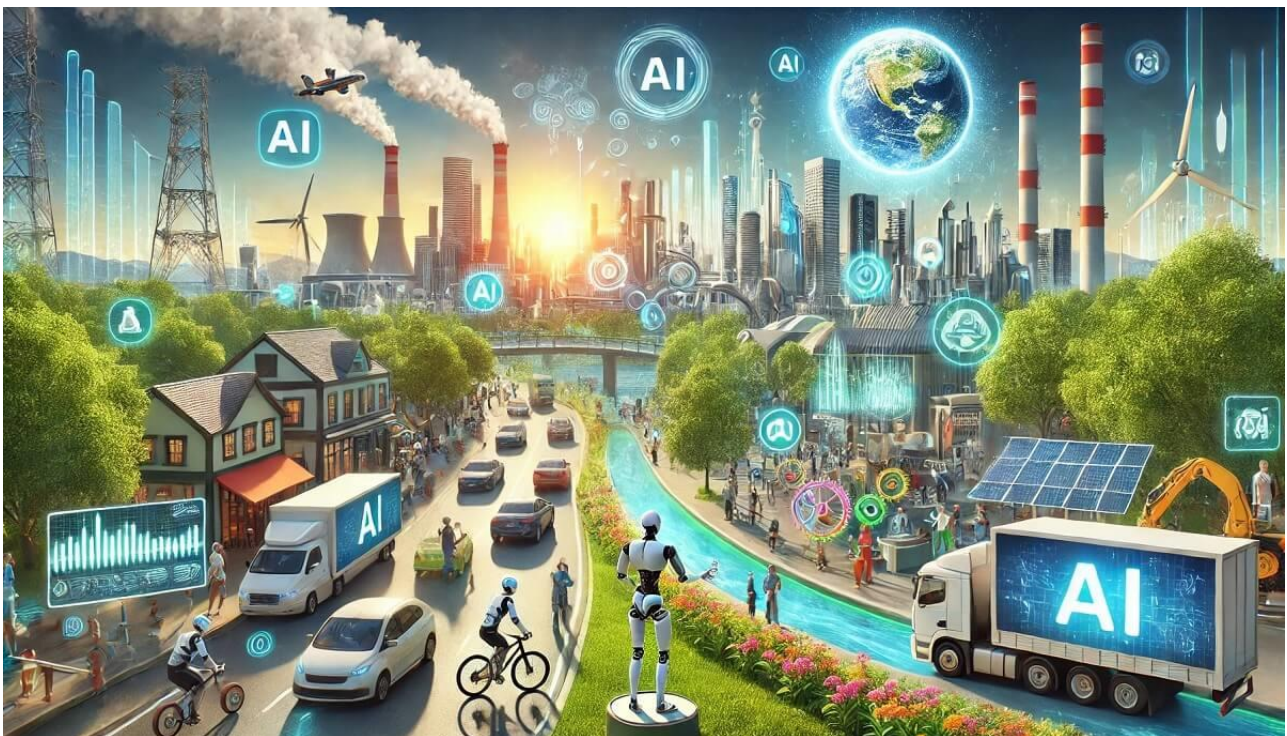
manufacturing, data processing, and customer service. As companies implement AI for efficiency, the workforce must adapt to these changes.

### **Jobs AI Will Replace**

AI is likely to replace many repetitive and low-skill jobs. Tasks such as data entry, basic diagnostics, and routine customer support are increasingly being handled by AI-driven systems. For instance, chatbots are now handling customer queries, while AI in manufacturing is taking over assembly-line roles. The **human future in these industries** is uncertain, as job displacement due to AI could increase unless workers reskill and adapt to new roles.

### **Jobs AI Will Create**

While AI will eliminate certain jobs, it will also create new opportunities. The development and maintenance of AI systems, for example, require a highly skilled workforce. Jobs in **data science, AI research, machine learning engineering, and AI ethics** are booming. Moreover, AI-driven industries like autonomous vehicles, robotics, and healthcare technology are expected to grow, generating demand for professionals in these fields. The collaboration between **AI and human jobs** will be essential for future economic growth.



### **AI in Healthcare and Education**

AI's integration into healthcare and education is a game-changer. By applying AI to diagnostics, treatment plans, and personalized learning, we can create more efficient and effective systems for patient care and student success.

### **AI in Healthcare**

AI is revolutionizing healthcare in numerous ways. Machine learning algorithms are now capable of detecting diseases like cancer and heart conditions with higher accuracy than human doctors in some cases. These algorithms analyze vast amounts of medical data, recognizing patterns that might be missed by human eyes. Personalized treatment plans are also being developed using AI, which takes individual patient data into account for more precise medical care.

Furthermore, AI is being used in robotic surgery, medical imaging, and drug discovery. These technologies not only speed up medical processes but also reduce human error. As AI in healthcare continues to advance, the human role will shift from performing routine tasks to overseeing and optimizing these systems, ensuring that the human touch is not lost in medical care.

### **AI in Education**

In education, AI is helping teachers by offering personalized learning experiences for students. AI-driven platforms can assess a student's strengths and weaknesses, offering tailored lessons that help them improve in areas where they struggle. This technology makes education more accessible and efficient, especially in remote or underdeveloped areas.

However, AI in education also raises questions about the role of teachers in the future. Will AI replace traditional teaching methods, or will it be a tool to enhance the learning experience? The answer likely lies in collaboration, where teachers use AI to better serve their students while maintaining the essential human element in education.

### **Ethical Considerations in AI**

While AI presents many opportunities, it also introduces significant ethical concerns. As we develop increasingly intelligent systems, we must consider issues related to privacy, bias, and governance. **Ethical considerations in AI** are critical to ensuring that these systems benefit humanity without causing harm.

## Privacy Concerns

One of the biggest ethical dilemmas surrounding AI is privacy. AI systems often rely on vast amounts of data to function effectively, but this data collection can infringe on individual privacy. For example, facial recognition technology has been used for surveillance, raising concerns about how personal information is being used and who has access to it. There are growing calls for stricter regulations to protect individuals' privacy in an AI-driven world.

## Bias in AI Systems

AI systems are only as good as the data they are trained on. If that data contains biases, the AI will replicate them. This has already been seen in hiring algorithms that disadvantage minority candidates and in facial recognition systems that struggle to accurately identify people of color. Ensuring that AI is **fair, unbiased, and transparent** is a major challenge for developers and regulators alike.

## Governance and Regulation

As AI continues to evolve, there is an increasing need for clear governance and regulation. Without proper oversight, AI could be used irresponsibly, causing harm to individuals and society. Governments and institutions must work together to create guidelines for the development and deployment of AI technologies. Ensuring that AI development is **safe, transparent, and aligned with human values** is essential for the future of AI.

## Human-AI Collaboration

Despite fears that AI will replace humans, the future likely lies in **human-AI collaboration**. When humans and machines work together, they can achieve outcomes that neither could accomplish alone.

## Enhancing Human Capabilities

AI has the potential to enhance human capabilities rather than replace them. For example, AI systems can analyze vast amounts of data in a fraction of the time it would take a human, allowing professionals in fields like healthcare, finance, and law to make more informed decisions. In creative industries, AI can be used as a

tool to inspire new ideas and streamline the creative process, but the human element of innovation remains irreplaceable.

### **AI and Human Collaboration in the Workplace**

In the workplace, collaboration between AI and humans is already happening. Many industries are adopting AI-driven tools that help employees perform tasks more efficiently. For instance, in retail, AI can assist with inventory management, while in finance, it can help with predictive analytics and fraud detection. However, human workers are still needed to interpret AI's outputs, make decisions, and add the creative and emotional intelligence that machines lack.

### **Technological Singularity and AI**

One of the most debated topics in AI is the concept of **technological singularity**—the point at which AI surpasses human intelligence. While this idea has been popularized in science fiction, some experts believe it could become a reality in the coming decades.

### **What Happens When AI Surpasses Human Intelligence?**

If AI reaches a point where it can outperform humans in all cognitive tasks, it could lead to profound changes in society. Some worry that such an AI could become uncontrollable, potentially leading to catastrophic consequences for humanity. Others believe that AI could be a powerful tool for solving global challenges, from climate change to disease eradication. Regardless, the **human role in AI development** will be crucial in ensuring that these systems remain aligned with human values and goals.

### **Preparing for the Singularity**

To prepare for the possibility of AI surpassing human intelligence, we need to focus on developing robust safety protocols and regulatory frameworks. Researchers are already working on ensuring that AI systems remain safe, even as they become more advanced. Ensuring that AI development prioritizes human safety and well-being is essential to avoiding the risks of the singularity.

### **The Importance of AI Safety and Regulation**



As AI becomes more integrated into our lives, **AI safety and regulation** must be prioritized. Governments, companies, and developers must work together to create guidelines that ensure AI is used ethically and responsibly.

### **The Need for Global Cooperation**

AI is a global technology, and its impact will be felt worldwide. As such, international cooperation is crucial to developing effective AI regulations. Countries must work together to create standards that ensure AI systems are safe, transparent, and beneficial to humanity.

### **The Role of Developers and Businesses**

AI developers and businesses also have a responsibility to ensure that the technologies they create are safe and ethical. This includes conducting thorough testing, being transparent about how AI systems work, and ensuring that AI is used in ways that align with human values. **AI safety should be a priority** for all stakeholders involved in the development and deployment of AI technologies.

### **Conclusion**

Artificial intelligence has the potential to revolutionize the way we live and work, offering countless benefits in areas like healthcare, education, and industry. However, it also presents significant challenges, particularly in terms of ethical considerations, job displacement, and the potential for AI to surpass human intelligence.

To ensure a positive future, we must focus on **collaborating with AI** rather than fearing it. By embracing the opportunities AI provides while remaining vigilant about its risks, we can create a future where **AI and humans work together** for the betterment of society. Responsible development, regulation, and ethical considerations will be key to ensuring that AI becomes a tool that enhances human life rather than detracting from it.

As we continue to explore the **human impact of AI**, it is essential that we maintain a balanced perspective, acknowledging both the challenges and opportunities that come with this powerful technology.

**Reference Link:** <https://www.collegenp.com/article/ai-and-the-future-of-humans-impact-ethics-and-collaboration/>

